

FORMA 800 TUNNEL

WITH FLA4+ 590 AUTOMATIC BEV® BURNER

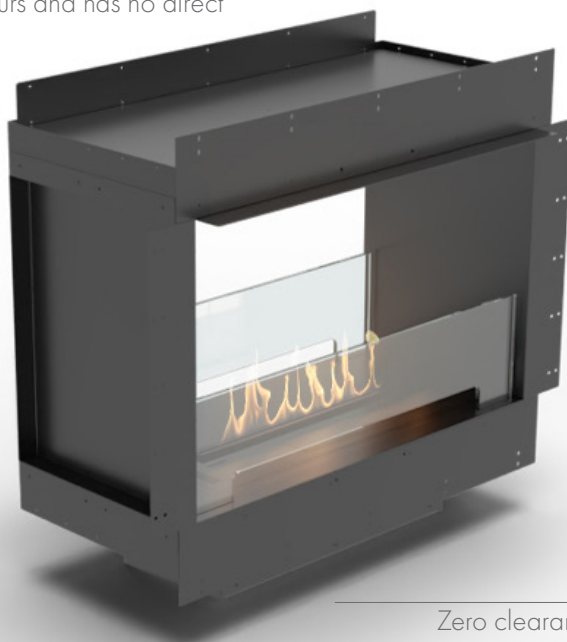
Net Zero fireplace with the BEV Technology®

AUTOMATIC BEV® BURNER

The automatic burner with the patented BEV Technology® is the most advanced product in the industry ensuring the cleanest burning process without any smoke, smell or ash. The flame is produced by combusting ethanol vapours and has no direct contact with the liquid fuel.

NEW BURNER DESIGN

The FLA4 design features a sleek black burner with a hidden filament and a holder-free glass panel that seamlessly slides into place. This contemporary update offers both aesthetic appeal and enhanced functionality.



TRUE ZERO CLEARANCE

Zero clearance fireplaces, designed to be safely installed with combustible materials like wood or drywall, revolutionize traditional fireplace installation and design, allowing for the creation of sleek media walls by enabling a TV to be mounted directly above.

REMOTE CONTROL

Control the fire with the included remote, app on your smartphone or home automation system.

AUTOMATIC REFILLING SYSTEM

The automatic pump communicates with the device, delivering the necessary amount of fuel. There is no risk of overfilling the tank or spilling the fuel.

INNOVATIVE TOUCH CONTROL PANEL

The touch control panel in the FLA4 fireplace combines modernity with elegance, being concealed behind a flap. With it, you can easily adjust the fireplace settings, check fuel levels, or set a shut-off timer. Additionally, the child lock feature ensures safety for the youngest users.



BEST BUILD QUALITY

The product passed extensive tests carried out by the leading certification institutes. It is manufactured according to UL standards and is O-TL certified, meeting the most demanding safety and quality requirements.

Forma 800 Tunnel

| | |
|-------------------------|--|
| Burner model | FLA4+ 590 (BEV Technology®) |
| Fuel tank capacity | 9.6 L |
| Maximum burn time | 16 hours |
| Maximum heat output | 3.1 kW |
| Minimum room cubature | 31 m ³ |
| Flame height regulation | 6 stages |
| Weight | 61.2 kg |
| Fuel type | bioethanol 95 - 96,6% |
| Flue | not required |
| Air change rate | 1 space volume per hour |
| Power supply | 230 V |
| Finish | black powder coating |
| Materials | steel, galvanized steel, toughened glass |
| Application | for indoor use only |

CONTROL OPTIONS



included



included



optional

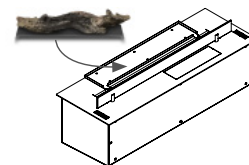
'FLA4 NET-ZERO' APP

Control the fire with your smartphone!



OPTIONAL DECORATIVE TRAY

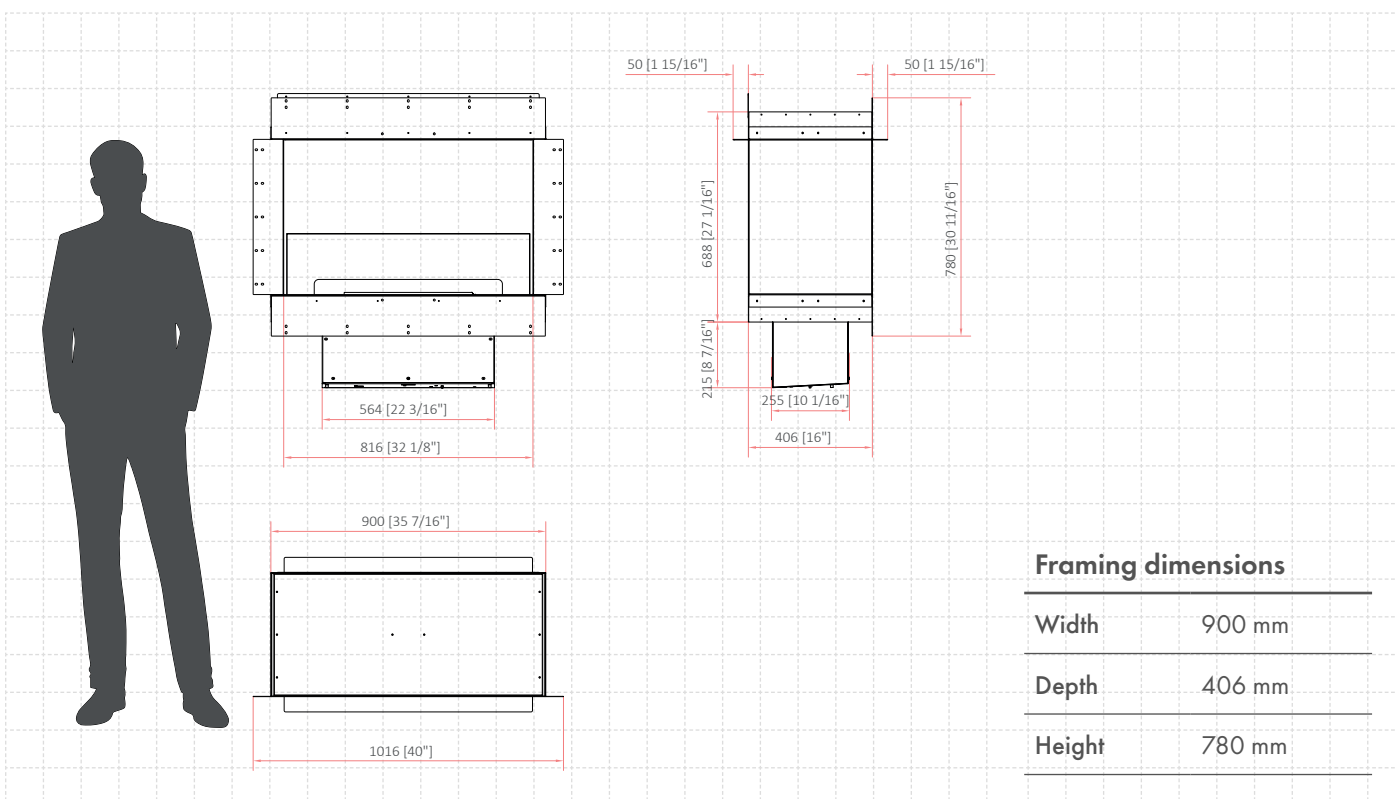
Decorative tray with 1 ceramic log or white stones installed on the burner, behind the fireline.



O-TL certified



Manufactured to UL standards



Framing dimensions

| | |
|--------|--------|
| Width | 900 mm |
| Depth | 406 mm |
| Height | 780 mm |